

INTERIOR PANELS

Think Trespa



TRESPA®



IF YOU ARE LOOKING FOR UNIQUE SURFACE PROPERTIES, THINK TRESPA

As the leading producer of world-class architectural materials, Trespa International produces a range of functional panels for demanding interior applications: Trespa Virtuon. These panels deliver exceptional performance in terms of hygiene, cleanliness and design.

The importance of hygiene has long been recognised by designers and users of demanding interiors. The rising cost of cleaning drives the need for surface materials that can be cleaned fast and effectively and do not support bacterial growth. In addition, these materials need to be durable, environmentally sound and help to create a pleasant and attractive interior.

Trespa Virtuon

Trespa Virtuon has established a reputation for quality and durability. Impact and moisture resistant Trespa Virtuon combines the durability of HPL Compact panels with a closed, impermeable surface which is easy to clean and resistant to cleaning agents and disinfectants. Trespa Virtuon panels are manufactured using a proprietary EBC process, producing a surface that can be maintained with minimum effort - keeping panels free of stains and blemishes for many years, even in the most challenging environments. Moreover, Trespa Virtuon offers a wide range of design possibilities with its extensive range of colours, metallic finishes and textures.

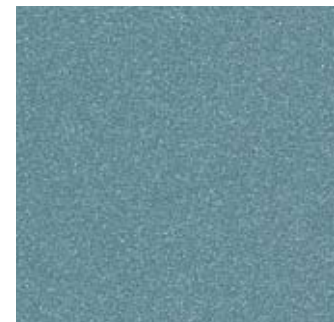
Proven effectiveness

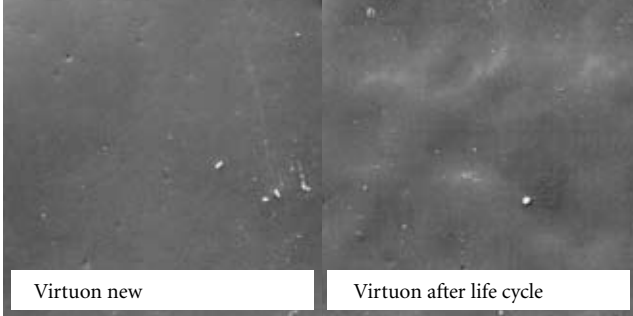
Literally thousands of architects and interior designers around the world have already experienced how these panels can help them to create living environments that combine striking aesthetics and long-lasting visual impact with exceptionally high levels of hygiene in environments where bacteria and dirt pose a real threat. From hospitals to healthcare facilities, from transport terminals to sports centres and from retail outlets to museums, Trespa Virtuon has proven effectiveness in maintaining a healthy environment.

Clean, fast and safe

Practical experience is important – so are test results. Trespa Virtuon has been subjected to a range of tests by renowned institutes. Their conclusion: thanks to its closed surface, Trespa Virtuon is easy to clean and disinfect. To underline its effectiveness, Trespa Virtuon carries a product guarantee of 10 years on impact resistance, moisture resistance and cleanability.

Using Trespa's proprietary installation system TS-2000, Trespa Virtuon can be installed easily and quickly, saving time and resources. In addition, the panels have an excellent environmental profile, having been manufactured to standard ISO 14001 – and come complete with Life Cycle Analysis (LCA) reports.





These microscopic pictures of the urethane-acrylic surface of Trespa Virtuon show that there is no difference between fresh material and material with which 10 years of aggressive cleaning is simulated.

MADE FOR FREQUENT CLEANING

In demanding environments, regular and frequent cleaning continues to deliver the highest levels of hygiene. So ease of cleaning is a key requirement – and here Trespa Virtuon delivers significant benefits. When compared to other frequently used surface materials, the use of Trespa Virtuon can save an average of 75 hours per year per m² of material.

- > Low dirt pick up due to the smoothness of Virtuon's urethane-acrylic surfaces.
- > Surfaces can be cleaned effectively, with more aggressive cleaning agents resulting in removal of a larger part of the contamination.
- > High cleaning efficiency: switches and control panels can be slotted into the Trespa surfaces and connections with the floor can be made flush.
- > Due to optimum sheet sizes the number of joints is limited and several hygienic and durable joint solutions are available.
- > Trespa Virtuon will retain its good looks for many years despite frequent cleaning.



Koch + Partners, Architekten und Stadtplaner, Germany



Architectenburo Cepezed, The Netherlands

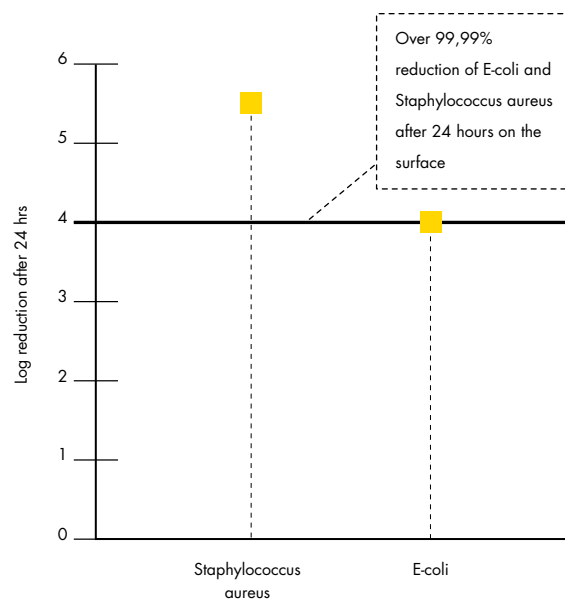


RESISTANT TO BACTERIA

No need for anti-microbial additives. Trespa Virtuon has its anti bacterial properties incorporated in the product without the use of anti-microbial additives. This means that these properties will remain active throughout the product's lifetime.

- > The smooth and non-porous surfaces of Trespa Virtuon do not support growth of micro-organisms. Bacteria stains will dry relatively fast on the surface – and bacteria will not find any source of nutrition on the material.
- > Hygiene properties of Trespa Virtuon remain the same under extreme conditions.
- > Trespa Virtuon can be installed dry with a minimum of dust being released, thus reducing the risk of release of airborne particles capable of transporting micro-organisms.

Reduction of colony forming units (cm²) on Trespa Virtuon surface



* Tested by using the Japanese Industrial Standard JIS Z 2801: 2000.

A WELL-DESIGNED ENVIRONMENT

Trespa Virtuon provides architects, designers and installers with an excellent combination of brilliant colours and textures as well as special effects such as metallic colours. These help to create an interior that is both highly individual and exceptionally functional: by applying form and colour, Trespa Virtuon makes it possible to incorporate identity in the design.

Trespa Virtuon panels have an integrated decorative surface that is smooth, impermeable and impact resistant, with a unique brilliance and long-lasting aesthetic appeal - making it ideal for intensive use over a prolonged period of time. Trespa Virtuon is easy to clean so that it will keep its good looks for many years.

Easy installation

Whilst design is important, installation too plays a key role. Trespa Virtuon can be easily machined and installed in many different ways. It is possible to create large surfaces with minimal jointing. This creates openness and underlines transparency. Switches and control panels can be slotted into the Trespa surfaces and connections with the floor can be made flush for high cleaning efficiency; with optimal sheet sizes the number of joints is limited and several hygienic and durable joint solutions are available.

Trespa Virtuon enables the user to create an interior with a personal touch – with the right atmosphere and the desired degree of comfort.





Yes, I would like to have more information:

Please call me for further information about

Other,

Company: _____

Name: _____ M/F

Job Title: _____

Address: _____

Postal code: _____ Town: _____

County: _____

Telephone: _____

E-mail: _____

Yes, my email details may be used to keep me informed of the latest developments at Trespa.



Arch. Corgan Associates, Inc.,
United States

Trespa International B.V.

Trespa International B.V. specialises in high quality panel material for façade cladding and interior use. Trespa has both the expertise and the means to develop products for specific segments of the market. Trespa is continually looking for ways to protect the environment even more effectively.

Trespa guarantees quality of both products and services. We offer our customers optimal technical support as well as straightforward documentation. Proof of this approach is the award of the ISO 9001 and ISO 14001 certificates.



Whatever your requirements, Trespa offers a full support service. Please contact us for further information.

Conditions of Sale

To all our offers, quotations, sales, deliveries and supplies and/or agreements, and to all related services and activities the

Trespa International B.V. General Conditions of Sale apply, filed at the Venlo Chamber of Commerce on 11 April 2007, registered under number 24270677, and appearing on the website at www.trespa.com. The text of these General Terms and Conditions will be sent to you upon request.

Responsibility

We believe all information in this publication to be correct at the time of printing. It is intended as information concerning our products and their application possibilities and is therefore, not intended as any form of guarantee with regard to any specific product characteristic.

Colours

The colours in this document are printed, and therefore, may vary slightly from the original Trespa panel colours with respect to gloss, colour shades and surface texture. Original samples are available on request.

Registered trademarks

® Trespa, Meteor, Athlon, Toplab, Virtuon, Volkern, Ioniq

and Inspirations are registered trademarks of Trespa International B.V.

Copyrights

© All rights reserved. No part of this publication may be reproduced, stored in a retrieval system, or made public, in any form or by any means, either graphic, electronic or mechanical, including photocopying, recording or otherwise, without the prior written permission of Trespa International B.V.

Projects on cover:
De Vloed Bvba Architectenburo, Belgium.
Architectenbureau Schoonbaert, Belgium.
Koch + Partners Architekten und Stadtplaner, Germany.



Architectenburo C. Pezeel, The Netherlands

Trespa UK Ltd

Grosvenor House
Hollinswood Road
Central Park, Telford
Shropshire, TF2 9TW
Tel.: 44 (0) 1952 290707
Fax: 44 (0) 1952 290101
info@trespa.co.uk

Trespa International B.V.

P.O. Box 110, 6000 AC Weert
Wetering 20, 6002 SM Weert
The Netherlands
www.trespa.com

EMEA Export

Tel.: 31 (0) 495 458 359 / 285
Fax: 31 (0) 495 458 383
infoexport@trespa.com

Trespa North America Ltd.

12267 Crosthwaite Circle
Poway, CA 92064
Tel.: (1)-800-4-TRESPA
Fax: (1)-858-679-0440
info@trespanorthamerica.com

Asia/Pacific Sales Support

Tel.: 31 (0) 495 458 812
Fax: 31 (0) 495 458 383
infoapac@trespa.com

Trespa China Co. Ltd.

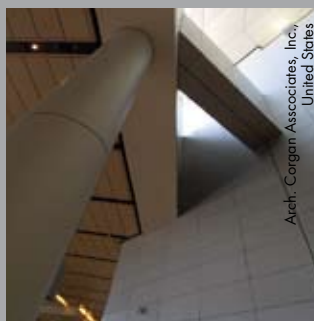
Room 2604-05, HuaiHai Plaza
No. 1045 HuaiHai Road (central)
ShangHai 200031, P.R. China
Tel.: 86 (0) 21 6288 1299
Fax: 86 (0) 21 6288 1296
infochina@trespa.com

CSD Asia/Pacific

Tel.: 86 (0) 21 5465 8388
Fax: 86 (0) 21 5465 6989

Trespa Singapore Pte Ltd.

UOB Plaza 1
80 Raffles Place
Level 35 Room 8
Singapore 048624
Tel.: 65 6248 4613
Fax: 65 6248 4501
infoapac@trespa.com



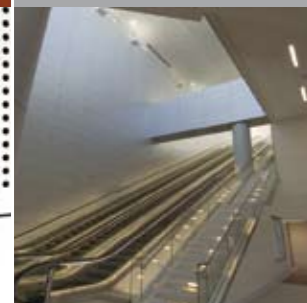
Arch. Corgan Associates, Inc.
United States

Your Trespa distributor:



code U4451
version 01-2008 copies 5000

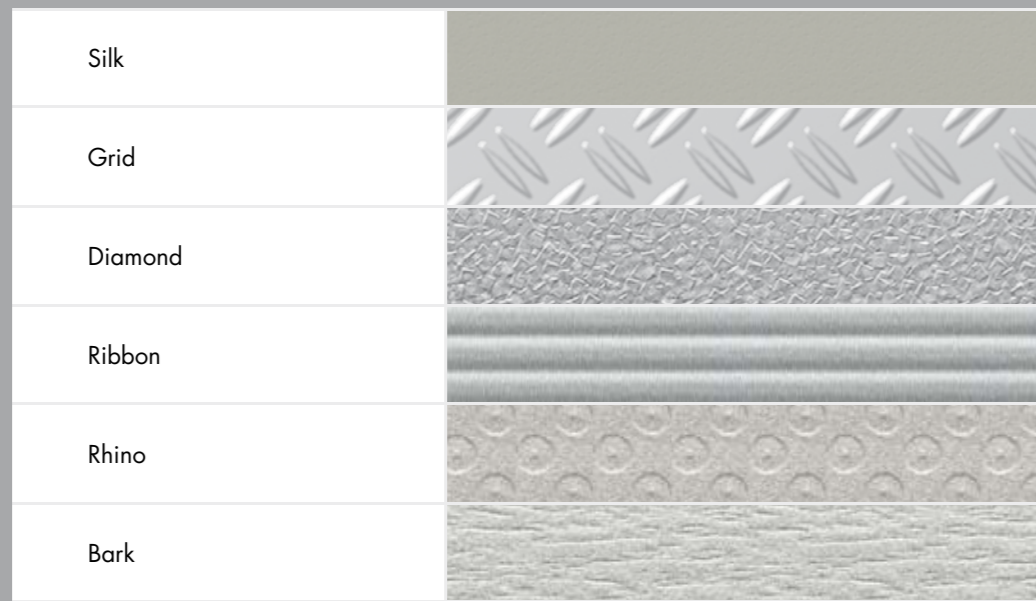
www.trespa.com



Standard Textures



Textures on request



THE FINISHING TOUCH

The Virtuon range of colours can be complemented by a choice of finishes that provide a highly tactile and aesthetic finish for your interior. Trespa Virtuon is available with 8 textures.

Trespa Virtuon metallics feature a directional coloured surface. See technical documentation or installation guidelines for further information

Metallics

J 04.0.0 Pearl	[Sample]
J 06.4.1 Amber	[Sample]
J 12.4.2 Garnet Red	[Sample]
J 18.7.2 Amethyst	[Sample]
J 20.4.2 Northern Light	[Sample]
J 21.3.4 Azurite Blue	[Sample]
J 24.3.3 Lagoon	[Sample]
J 34.3.1 Bottle Green	[Sample]
J 40.4.3 Mustard Yellow	[Sample]
J 51.0.1 Aluminium Grey	[Sample]
J 51.0.2 Urban Grey	[Sample]
J 21.8.1 Graphite Grey	[Sample]

The colours in this document are printed, and therefore, may vary slightly from the original Trespa panel colours with respect to gloss, colour shades and surface texture. Original samples are available on request.

Projects on cover:
Architectenbureau Schoonbaert, Belgium
527 Architects, United States
Architectenburo Cepezed, The Netherlands
Arch. Corgan Associates, Inc., United States

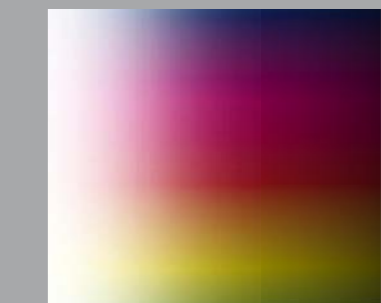
Uni colours

K 04.1.7 Gold Yellow	[Sample]
K 04.0.5 Zinc Yellow	[Sample]
K 05.1.2 Champagne	[Sample]
K 07.1.1 Sand	[Sample]
K 03.0.0 White	[Sample]
K 05.0.0 Pure White	[Sample]
K 05.1.1 Stone Beige	[Sample]
K 08.2.1 Mid Beige	[Sample]
K 08.3.1 Stone Grey	[Sample]
K 13.3.1 Heather	[Sample]
K 10.3.2 Old Rose	[Sample]
K 08.2.3 Salmon	[Sample]
K 06.3.5 Ochre	[Sample]
K 08.4.5 Rusty Red	[Sample]
K 10.4.5 Sienna Brown	[Sample]
K 13.3.7 Ruby Red	[Sample]
K 12.3.7 Carmine Red	[Sample]
K 10.1.8 Red Orange	[Sample]
K 11.4.4 English Red	[Sample]

K 12.6.3 Wine Red	[Sample]
K 10.6.1 Taupe	[Sample]
K 16.5.1 Mauve	[Sample]
K 17.3.5 Cyclam	[Sample]
K 18.3.5 Plum Blue	[Sample]
K 20.5.2 Lavender Blue	[Sample]
K 22.4.4 Brilliant Blue	[Sample]
K 21.5.4 Cobalt Blue	[Sample]
K 22.6.2 Dark Denim	[Sample]
K 20.7.2 Dark Blue	[Sample]
K 25.7.1 Iron Grey	[Sample]
K 03.4.0 Silver Grey	[Sample]
K 03.1.0 Pastel Grey	[Sample]
K 22.3.1 Ocean Grey	[Sample]
K 28.2.1 Aquamarine	[Sample]
K 24.4.1 Steel Blue	[Sample]
K 22.2.4 Powder Blue	[Sample]
K 23.0.4 Mineral Blue	[Sample]
K 20.2.3 Light Viola	[Sample]

K 24.3.5 Turquoise Blue	[Sample]
K 30.2.3 Brilliant Turquoise	[Sample]
K 30.3.2 Verdigris	[Sample]
K 32.2.1 Translucent Green	[Sample]
K 37.2.3 Spring Green	[Sample]
K 36.3.5 Turf Green	[Sample]
K 32.7.2 Dark Green	[Sample]
K 28.6.2 Mid Green	[Sample]
K 90.0.0 Black	[Sample]
K 40.5.1 Moss Green	[Sample]

COLOUR YOUR IMAGINATION



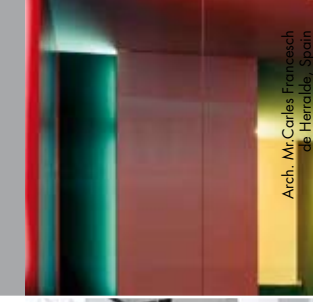
Trespa Virtuon panels are available in a wide choice of standard colours and effects. These panels have the ability to transform, enhance or even add new dimensions to your design.

Trespa Virtuon Panels can be custom-made in special project colours which allows to add identity to your design. Trespa Virtuon is not just beautiful - it is exceedingly robust and durable so today's vision will remain tomorrow's reality.



VIRTUON

UNLIMITED POSSIBILITIES



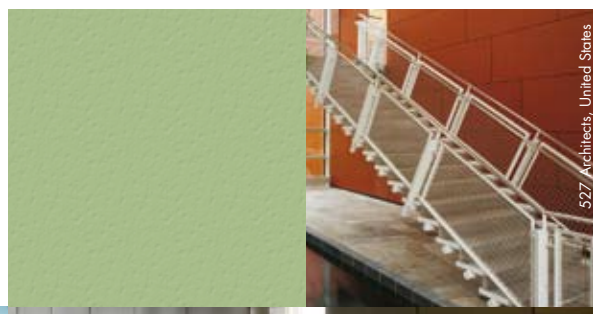
Arch. Mr. Carlos Fernandez
Madrid, Spain



Arch. Corgan Associates, Inc.,
United States

An interior reflects the identity of its users; good interiors are distinguished by a tactile identity. With its freedom of form and colour, Trespa offers numerous opportunities to add identity to a design.

Beauty thrives best in freedom. For a designer this means having the freedom to make choices. The choice to distinguish themselves without losing sight of the room's functions and its users. The choice to add emotion to designs, in all honesty. Design freedom is one of the principles on which Trespa bases its collection. Sources of inspiration pointing the way without posing any restrictions. Offering possibilities without marking boundaries. Trespa calls these sources of inspiration Perspectives. A platform where users' requirements and designers' ideas come together.



527 Architects, United States



BV H Hurekamp Architecten BNA, The Netherlands

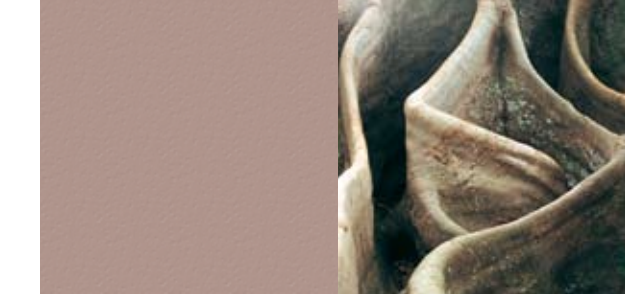


Architectuurvereniging Schiedamschen, Belgium

Making a distinction

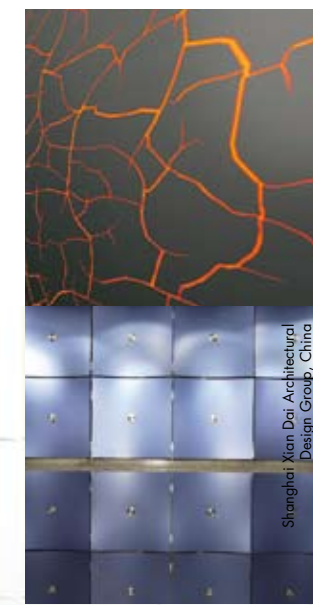


An interior has to grow along with human needs. Interaction with its users requires a certain flexibility of the interior. Trespa creates dynamics in a room with materials creating the right atmosphere and ensuring that the environment is enjoyed with pleasure.



Creating dynamics

Every interior is an expression of a vision. The better this vision can be expressed, the more successful the interior will be. Trespa can easily be machined and installed, and in many different ways. Enabling you to create an interior that has your personal touch.



Shanghai Ren Dao Architectural Design Group, China

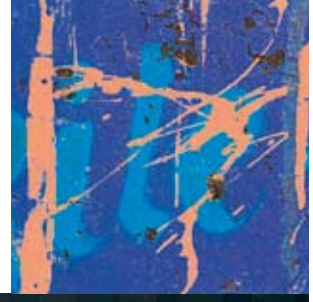


Arch. Bryn Hudson, Australia



Arch. Corgan Associates, Inc., United States

Showing emotions



Pure materials in pure applications create a feeling of natural tranquillity and a perception of space. The large surfaces which can be created with Trespa underline this openness and create transparency with minimal jointing.



Creating transparency

COLOUR COLLECTION DESIGN FREEDOM

TRESPA®



Arch. Agneta Sijpeff, Belgium



Arch. Mr. Carlos Fernandez
de Terradas, Spain



code U4450 version 01-2008 copies 5.000

TRESPA VIRTUON DELIVERY PROGRAMME

	Uni colours		Metallics	
	in Satin	in Rock	in Satin	in Rock
Panel size (mm)				
3650 x 1860	■	■	■	■
2550 x 1860	■	■	■	■
3050 x 1530	■	■ ¹	■ ¹	■ ¹
Panel thicknesses (mm)				
6	■			
8	■	■	■	■
10	■	■	■	■
13	■	■	■	■
Type/Qualities				
Coloured on one side	■	■	■	■
Coloured on both sides	■	■ ²	■	■ ²
Standard grade (Non-FR)/ black core	■	■	■	■
Fire retardant (FR)/black core	■	■	■	■
Minimum order quantity				
2 panels	■	■	■	■

¹ On request

² Coloured on both sides/Texture on one side

Please note:

Other possibilities are available on request (please contact your local Trespa office)

- > Other textures: silk, ribbon, rhino, bark, grid, diamond
- > Project colours
- > Corner elements

Metallics: Trespa Virtuon panels feature a directional colour surface. See technical documentation or installation guidelines for further information. The full quantity of Trespa Virtuon Metallics sheets required for a project should be ordered and supplied as a single instruction.

Fire Retardant Grade: Trespa Virtuon single-sided decorative Fire Retardant grade will be faced with an identification print on the reverse of the panel in addition to the panel sticker. Trespa Virtuon double-sided decorative Standard Grade (Non-FR) and Fire Retardant Grade can be clearly identified and distinguished on the basis of the panel sticker.

Registered trademarks

® Trespa, Meteon, Athlon, Toplab, Volkern, Ioniq, Inspirations and Virtuon are registered trademarks of Trespa International BV.

Responsibility

All information is based on our current state of knowledge. It is intended as information concerning our products and their application possibilities, and is therefore not intended as any form of guarantee with regard to any specific product characteristic.

Colours

The colours in this document are printed, and therefore, may vary slightly from the original Trespa panel colours with respect to gloss, colour shades and surface texture. Original samples are available on request.

Copyrights

© All rights reserved. No part of this publication may be reproduced, stored in a retrieval system, or made public, in any form or by any means, either graphic, electronic or mechanical, including photocopying, recording or otherwise, without the prior written permission of Trespa International BV.

MATERIAL PROPERTIES

Properties	Value	Unit	Standard
Physical properties			
Density	≥ 1350	kg/m ³	ISO 1183
Weight			
> Thickness 6 mm	8,5	kg/m ²	
> Thickness 8 mm	11,0	kg/m ²	
> Thickness 10 mm	14,0	kg/m ²	
> Thickness 13 mm	18,5	kg/m ²	
Optical properties			
Resistance to surface wear	≥ 150 ≥ 350	Revolutions: Initial point Wear Resistance	EN 438-2 EN 438-2
Scratch resistance	≥ 3	Rating	EN 438-2
Behavior after been immersed in 100°C water for 2 hours:			
> Mass increase	≤ 1	%	EN 438-2
> Thickness increase	≤ 1	%	EN 438-2
> Appearance	≤ 4	Rating	EN 438-2
Dimensional stability at increased temperature	= 0,25 ≥ 0,25	% (L) % (R)	EN 438-2 EN 438-2
Resistance to staining	5	Rating	EN 438-2
Resistance to colour change in artificial Xenon Light (UV-A)	≥ 6	Wool scale	ASTM G53-91 (315-400 nm)
Resistance to crazing	5	Rating	EN 438-2
Mechanical properties			
Modulus of elasticity	≥ 9000	N/mm ²	ISO 178
Flexural strength	≥ 100	N/mm ²	ISO 178
Tensile strength/surface	≥ 70	N/mm ²	ISO 527-2
Cleaning properties			
Removing graffiti, scale and common dirt:	good		
Trespa internal test, cleaning properties determined by cleaning with commercially available cleaning agents according to manufacturer's instructions, report available			
Resistant to cleaning			
Cleaning with high pressure sprayer	no change in appearance nor properties		
Cleaning with reference agents for the removal of graffiti, remnants of paint, ink, glue	no change in appearance nor properties		
Cleaning with reference agents for the removal of scale and cement deposits	no change in appearance nor properties		
Cleaning with reference agents for bleaching agent, disinfection means and waterbased cleaners	no change in appearance nor properties		
Trespa internal test, resistance determined by cleaning with (concentrated) reference agents, reports available			
Hygienic properties			
Surface disinfection	certificate of hygiene available (IKI)		
Contact with food	certificate of conformity available (ISEGA)		
Antibacterial properties			
Determination of antibacterial activity			
> Escherichia coli	> 99,99% reduction		JIS Z 2801:2000
> Staph Aureus	> 99,99% reduction		JIS Z 2801:2000
Fire classification			
Europe	Type FR 6 mm:	Euroclass B-s2, d0	EN 13501-1
	Type FR ≥ 8 mm:	Euroclass B-s1, d0	EN 13501-1
	Type standard (Non-FR):	Euroclass D-s2, d0	EN 13501-1

PANEL IS RECOMMENDED FOR USE IN INTERIOR APPLICATIONS



code U4452 version 01-2008 copies 5.000