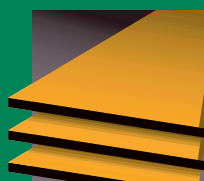


Trespa TopLab^{PLUS}.

Design à la carte.

laboratory



[®]TRESPA

All the best qualities in one panel

Leading laboratory designers choose Trespa TopLab^{PLUS} both for its looks and for its quality, safety and hygiene.

Its surface looks good and stays looking good whilst offering:

- *the highest possible standards of hygiene*
- *ease of cleaning and disinfection*
- *strength and durability*
- *environmentally sustainable characteristics*

A well appointed and goodlooking laboratory provides an efficient, effective and pleasant environment. TopLab^{PLUS} brings additional benefits both in aesthetics and functionality.

Trespa TopLab^{PLUS}



creating the right environment

Choosing laboratory furniture can be a complex task. Prime considerations are user comfort, aesthetics and hygiene. The average life-cycle of a laboratory is 15 years, so furniture should be durable and adaptable. Making the right decision can have long-term consequences for the overall performance of the laboratory: improved efficiency and enduring effectiveness.

Worktops in laboratories are especially vulnerable, as their material may influence the outcome of experiments and other work in progress. The material used for worktops needs to be durable, easy to maintain, resistant to extreme conditions and in line with international standards and legislation.



TopLab^{PLUS} the right choice

Trespa TopLab^{PLUS} is a self-supporting flat panel with a cellulose fibre reinforced phenolic resin core. Each panel has an integrated, decorative surface based on pigmented, electron beam cured resins which are resistant to the most aggressive chemicals, and easy to clean and maintain. These panels meet all the requirements of most laboratories while at the same time bringing additional benefits in terms of aesthetics. With TopLab^{PLUS}, keeping your laboratory in showroom condition is easy.

Key benefits include

- Durability
- Chemical resistance
- Impact resistance
- Scratch resistance
- Wear resistance
- Water resistance
- Easy to clean
- Easy to disinfect
- Environmentally friendly



Chemical and analytical areas



Durable and decorative

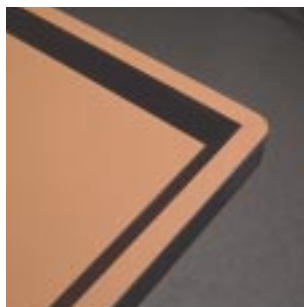
for thermal and
chemical resistance

Trespa TopLab^{PLUS} delivers excellent performance, even in the most demanding of environments. Aggressive chemicals will not mark a TopLab^{PLUS} surface at all – if cleaned within 24 hours. And thanks to its heat resistant properties, work surfaces retain their good looks.

TopLab^{PLUS} allows a new degree of design freedom. Processed in a similar way to hardwood, Trespa TopLab^{PLUS} can be machined and adapted to the changing technical needs of the laboratory: sinks (stainless steel, epoxy, polypropylene), drip cup, drainage holes and grooves can easily be incorporated. Edges and joints too are totally water-proof and chemically resistant without need for further finishing.

Once installed, TopLab^{PLUS} can simply be adapted to subsequent changes in the laboratory. It can be re-cut and retro-fitted with new taps, sinks or other equipment, whilst retaining all of its properties.

Trespa TopLab^{PLUS}: the finishing touch



Physical and educational areas



Tough and technical

Laboratories used frequently by different people or groups need to be strong and hard-wearing. They need to look their best at all times, as visible signs of wear will lead to a more casual approach by subsequent users.

TopLab^{PLUS} provides a tough and long-lasting surface that retains its good looks. Impact and scratch resistant TopLab^{PLUS} worktops are versatile as they easily double up as administrative working surfaces.



**mechanical strength
in a multi-user
environment**

TopLab^{PLUS} is ideal for a multi-functional environment. Its high impact resistance makes it especially suitable for use in trolley tops. As part of a mobile and flexible environment, TopLab^{PLUS} delivers added strength to any laboratory or lecture room.



Trespa TopLab^{PLUS}: the winner

Biological and clinical areas



Sterile and safe

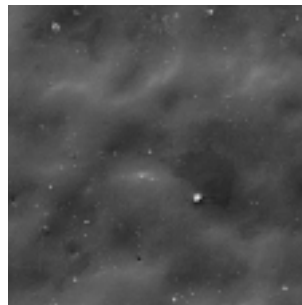
for chemical
resistance and
hygiene

In an environment where hygiene is key, TopLab^{PLUS} provides the best choice: its surface is absolutely impervious to all possible materials used in biochemical and medical laboratories: radio-isotopes, human tissue and blood samples or bacteria.

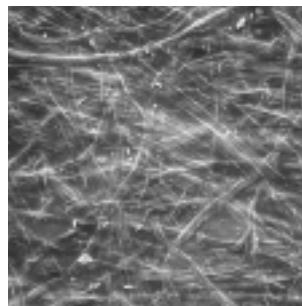
Biological or clinical test results are dependent on non-contamination. Trespa TopLab^{PLUS} provides a surface impermeable to bacteria, moulds or micro-organisms. Resistant to dyes and organic solvents, TopLab^{PLUS} is water-resistant and remains easy to clean or disinfect.

Trespa TopLab^{PLUS} is available in large panel sizes, so laboratories can be designed with a limited number of joints. Panels can be machined with ease - on-site or off-site - providing the perfect fit for every laboratory.

Trespa TopLab^{PLUS}: the first choice



TopLab^{PLUS}



Melamine

The photographs have been taken with the aid of a Scanning Electron Microscope. They clearly demonstrate the difference between a surface produced with Trespa EBC technology (Trespa TopLab^{PLUS}) and a surface of traditional melamine.

Lasting hygiene and ease of cleaning; see, compare and judge for yourself!

	Athlon (melamine)	TopLab ^{PLUS} (EBC)
Safe to touch – skin and foodstuffs	+++	+++
Effective and simple cleaning:		
Micro-organisms	++	+++
Organic greases, calcium, lime soap	+/-	+++
Graffiti	++	+++
Other stains	+	+++
Resistant to detergents and disinfectants:		
Cleaning according to guidelines	+	+++
Occasional deviation from guidelines	+/-	+++
Surface does not provide a breeding ground for Micro-organisms	++	+++
Resistant to:		
Damp/corrosion/rot	++	+++
Solvents	++	+++
Bleaches	+/-	+++
Steam	+	+++
UV exposure in interior use	++	+++
Biological stains	+	+++
Acids and bases, concentrated	+/-	+++
Effectiveness of disinfectant and decontamination	++	+++

- Insufficient +/- reasonable + acceptable ++ good +++ excellent







VISIT OUR NEW WEBSITE
WWW.TRESPA.COM

Quality.

Trespa International BV

Trespa International BV specializes in high quality panel material for façade cladding and interior use. Trespa has both the expertise and the means to develop products for specific segments of the market. Trespa is continually looking for ways to protect the environment even more effectively.

Four perfect product lines

Production of the façade cladding material Trespa Meteor is based on unique, patented techniques, which guarantee excellent weather resistance and colourfastness. Trespa Athlon, which offers outstanding moisture resistance along with scratch and wear resistance, is particularly suitable for interior use. Trespa Virtuon is aesthetically pleasing and the perfect product for interior applications where durability, hygiene, cleanability are required. And Trespa TopLab^{PLUS}, highly resistant to chemicals and designed for use as laboratory worktops, completes the product programme.

ISO 9001



Trespa guarantees quality of both products and services. We offer our customers optimal technical support as well as straightforward documentation. Proof of this approach is the award of the ISO 9001 certificate.

Whatever your requirements, Trespa offers a full support service. Please contact us for further information.

Design à la carte.

Trespa UK Ltd

Grosvenor House
Hollinswood Road
Central Park, Telford
TF2 9TW
Tel.: 44 (0) 1952 290707
Fax: 44 (0) 1952 290101
Info@trespa.co.uk

Trespa International BV

Postbus 110, 6000 AC Weert
Wetering 20, 6002 SM Weert
The Netherlands

Verkoop Nederland

Tel.: 31 (0) 495 458 850
Fax: 31 (0) 495 540 535
infonederland@trespa.com

Export Department Europe/Middle East Asia/Pacific

Tel.: 31 (0) 495 458 359 / 392 / 578
Fax: 31 (0) 495 458 383
infoexport@trespa.com

Trespa Belgium Bvba/Sprl

H. van Veldekesingel 150 B. 19
3500 Hasselt
Tel.: 0800 - 15501
Fax: 0800 - 15503
infobelgium@trespa.com
Grand Duché de Luxembourg
Tel.: 31 (0) 495 458 308

Trespa Germany GmbH

Richmodstraße 6, 50667 Köln
Tel.: 0800 - 186 04 22
Fax: 0800 - 186 07 33
infodeutschland@trespa.com

Trespa France

18 rue Chartran
92200 Neuilly sur Seine
Tel.: 33 (0) 1 41 92 04 80
Fax: 33 (0) 1 41 92 04 89
infofrance@trespa.com

GET s.l.

Girona, 67, 3.º, 2.ª
08009 Barcelona
Tel.: 34 (93) 488 03 18
Fax: 34 (93) 487 32 36
www.getsl.com / getsl@getsl.com

Trespa North America Ltd.

12267 Crosthwaite Circle
Poway, CA 92064
Tel.: (1)-800-4-TRESPA
Fax: (1)-858-679-0440
info@trespanorthamerica.com

Trespa Japan Ltd.

Toranomon Toyo Building 6F
4-2 Toranomon, 1-chome
Minato-ku, Tokyo 105-0001
Tel.: 81 (0) 3 3500 5080
Fax: 81 (0) 3 3504 0034
webmaster@trespa.co.jp

Trespa China Co. Ltd.

Room 2907, Plaza 66
No. 1266 Nanjing Road (W)
Shanghai 200040 P.R.C.
Tel.: 86 (0) 21 6288 1299
Fax: 86 (0) 21 6288 1296
infochina@trespa.com.cn

Registered trademarks

© Trespa, Meteor, Athlon, TopLab, Virtuon, Volkern, Ioniq and Inspirations are registered trademarks of Trespa International BV.

Responsibility

All information is based on our current state of knowledge. It is intended as information concerning our products and their application possibilities, and is therefore not intended as any form of guarantee with regard to any specific product characteristic.

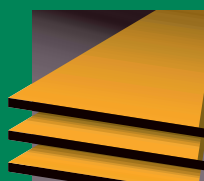
Colours

The colours in this document are printed, and therefore, may vary slightly from the original Trespa panel colours with respect to gloss, colour shades and surface texture. Original samples are available on request.

Copyrights

© All rights reserved. No part of this publication may be reproduced, stored in a retrieval system, or made public, in any form or by any means, either graphic, electronic or mechanical, including photocopying, recording or otherwise, without the prior written permission of Trespa International BV.

www.trespa.com



TRESPA

All the best qualities in one panel

U213

Your Trespa distributor: